



## So...who are we?



**Name:** Louise Bruun-Hansen  
**Title:** Marketing Officer at CPH MCC  
**Study:** Engineering Management (MSc.)  
**Work:** Student Assistant at Radiometer Medical

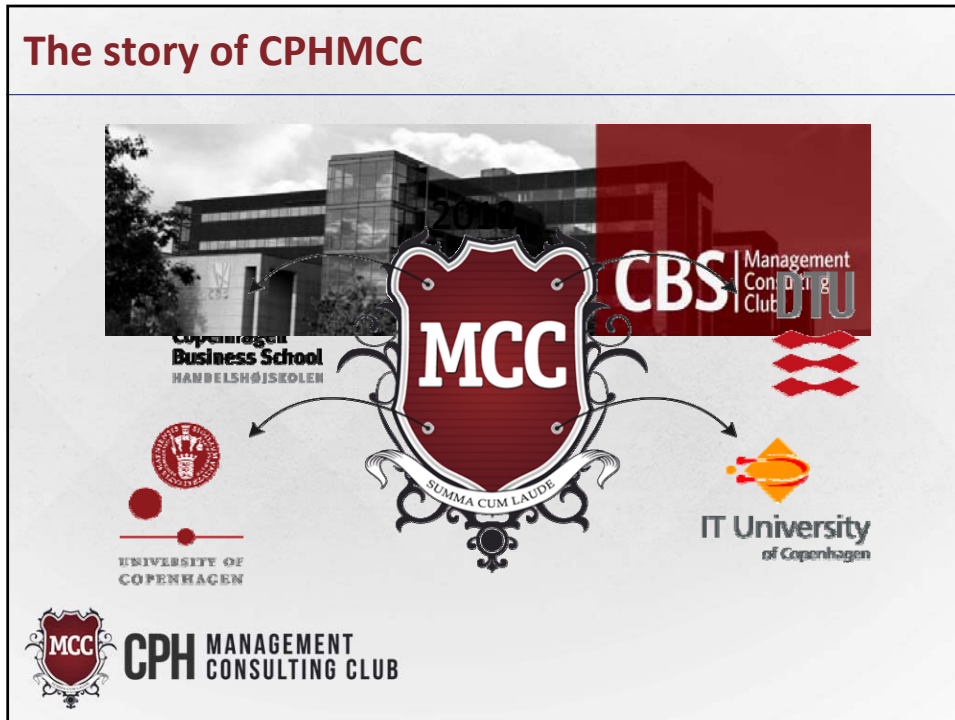


**Name:** Maiken Bruun-Ringgaard  
**Title:** Marketing Officer at CPH MCC  
**Study:** Civil Engineering (MSc.)  
**Work:** Student Assistant at MT Højgaard A/S







**CPH MANAGEMENT  
CONSULTING CLUB**

## The story of CPHMCC



## What we offer

<p><b>Knowledge</b></p> <p>The opportunity to learn industry specific knowledge and prepare for interviews.</p> 	<p><b>Networking</b></p> <p>A unique opportunity to expand and improve your network with like-minded peers.</p> 
<p><b>Events</b></p> <p>Access to cutting-edge events with some of the world's largest and most renowned consulting firms</p> 	<p><b>Partners</b></p> <p>The chance to meet corporate partners from some of the world's largest and most renowned consulting firms</p> 

 **CPH MANAGEMENT CONSULTING CLUB**

## What you can be part of

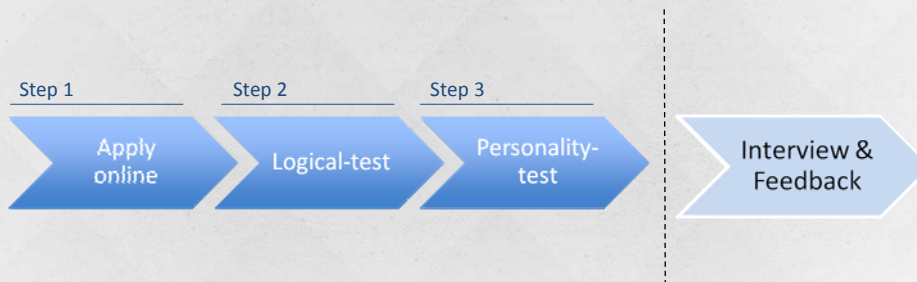


- Non-profit organization
- Run by students - for students
- 200 members
- Partnerships with 5 top-tier consultancies
- Professionally certified recruitment – 3 rounds



## To apply for membership you have to..

Deadline is 14<sup>th</sup> of April



## Our Partners – Find out more



[www.cphmcc.com](http://www.cphmcc.com)  
[www.facebook.com/CPHMCC](https://www.facebook.com/CPHMCC)



**CPH** MANAGEMENT  
CONSULTING CLUB